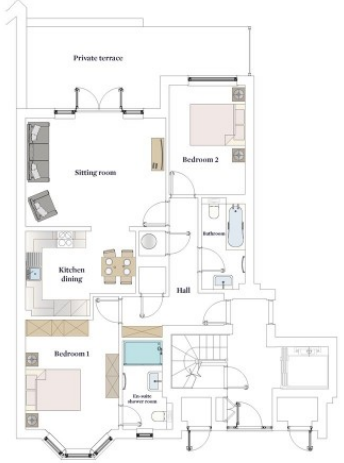


21, Braye Gardens
2 Bed Property For Sale in Vale



Floorplan A Apartment 21 / Ground Floor / 900 sq.ft 

Description

900 sq.ft ground floor garden apartment comprising hall, sitting/dining room, kitchen, bedroom one with en-suite shower room, bedroom two and bathroom. Private terrace and parking space. At Braye Gardens the emphasis is on living well with independence and peace of mind. Forming part of a brand new purpose built community of 55 units for residents 55 years and over, these well-located high-spec homes offer convenience and practicality with a sense of privacy and independence centred around beautiful, landscaped grounds. Each apartment benefits from being entirely lateral, with full lift access to all floors and generous, private outside spaces. There is dedicated parking for each home in addition to guest spaces for your family and friends...

Property Reference: lvr_1265 - #11384

Price: Under Offer

Beds	2
Baths	2
Location	Vale, Guernsey
Availability	Local
Type	Property

Contact Livingroom

Livingroom House, North Clifton, St. Peter Port

<https://www.livingroom.gg>

