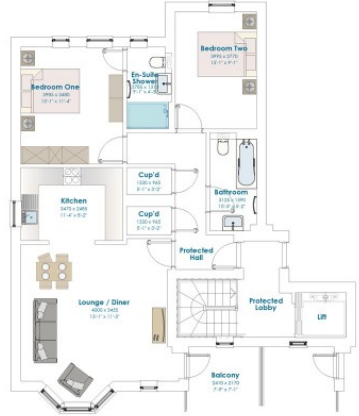


38, Braye Gardens
2 Bed Property For Sale in Vale



Apartment 38 First Floor / 900 sq. ft.
 

Description

900 sq. ft first floor apartment comprising hall, sitting/dining room open to kitchen, primary double bedroom, en-suite shower room, second double bedroom and bathroom. Balcony and parking space. At Braye Gardens the emphasis is on living well with independence and peace of mind. Forming part of a brand new purpose built community for residents 55 years and over, these well-located high-spec homes offer convenience and practicality with a sense of privacy and independence centred around beautiful, landscaped grounds. Each apartment benefits from being entirely lateral with full lift access to all floors. There is dedicated parking for each home in addition to guest spaces for your family and friends to visit without compromise. At the heart...

Property Reference: lvr_2021 - #14099

Price: GBP £545,000

Beds	2
Baths	2
Location	Vale, Guernsey
Availability	Local
Type	Property

Contact Livingroom

Livingroom House, North Clifton, St. Peter Port

<https://livingroomproperty.com>

