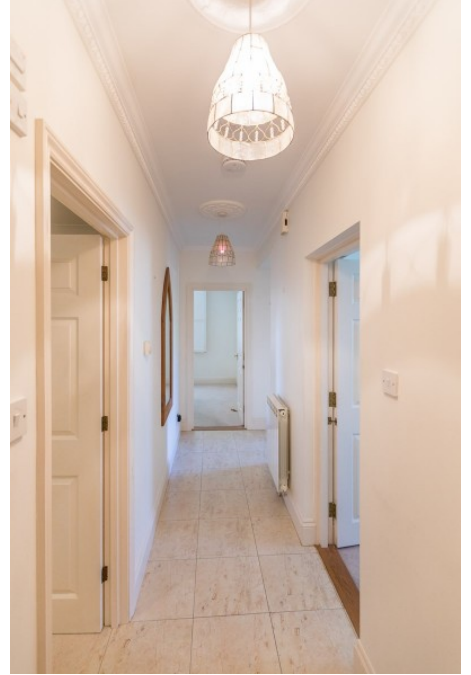


**Flat 2, Symphony Park Apartments  
2 Bed Property For Sale in Vale**



**Description**

This spacious ground floor apartment is situated within the prestigious Symphony Park development, set within a quiet rural lane close to L'Ancrese Common and nearby beaches. In good order throughout, the accommodation comprises communal entrance, entrance hall, sitting room with double doors to patio area, kitchen, two bedrooms and bathroom. Externally, there are communal, beautiful landscaped gardens and parking is available for two vehicles, plus visitor spaces, as well as a handy storage shed which is solely for the apartment. A desirable property set in a lovely location, internal viewing highly recommended. Please note there is a no pets policy.

**Property Reference:** lvr\_793 - #9437
**Price:** GBP £349,000

Beds	2
Baths	1
Location	Vale, Guernsey
Availability	Local
Type	Property

**Contact Livingroom**

Livingroom House, North Clifton, St. Peter Port

<https://www.livingroom.gg>

