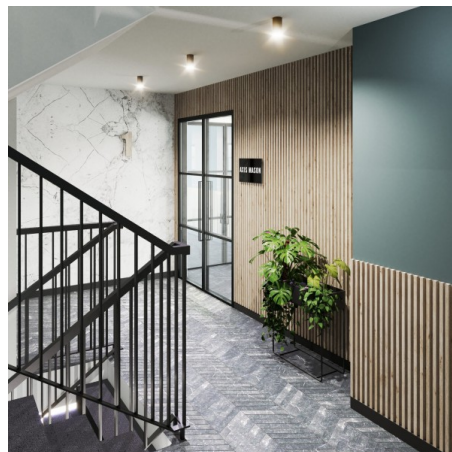


Suite GF A, Frances House, La Plaiderie
Commercial To Let in St. Peter Port



Description

LOCATION Frances House is located in Sir William Place which is within the center of the Central Business District, on the north side of the towncentre and within easy walking distance of the High Street and sea front.

ACCOMMODATION The contemporary main entrance foyer offers access to all floors via either stairs or lift. In addition there is a wing to the building which has its own entrance with stairs and lift to serve all floors. The fourth floor is of particular note, offering sea views over the islands from the offices and large terraced area. Refurbishment of the building is due to commence summer 2021 and ready for occupation January 2022. On completion of the refurbishment, the office suites will be presented with raised access flooring,...

Property Reference: roc_1729 - #13962

Price: GBP £3,178 p/m

Beds	0
Baths	0
Location	St. Peter Port, Guernsey
Availability	Local
Type	Commercial

Contact Peter Van de Velde

Rock Property

1 Harbour View, The Albany, South Esplanade, St Peter Port, GY1 1AQ, St Peter Port

<https://www.rockproperty.gg/>

