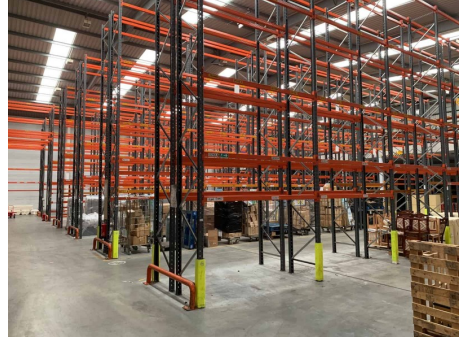


Longue Houge Lane Warehouse
Commercial To Let in St. Sampson's



Description

The warehouse is located on Longue Houge Lane close to St Sampson Harbour approximately 2 miles from St Peter Port. Travelling towards St Sampson along Bulwer Avenue from St Peter Port, Longue Houge Lane is the first turning on the left. The property was purpose built and completed in c. 2008. As such, it provides ultra-modern free span accommodation with an extremely high cubic capacity. The existing fit out includes an extensive racking system with elements of the mezzanine floor accessible by hydraulic goods lifts. The build fabric is of steel portal frame, clad with insulated powder coated sheet metal, constructed upon a high loadbearing reinforced concrete floor. Lighting is provided both naturally and artificially through a mixture...

Property Reference:

roc_longue_houge_lane_warehouse - #10726

Price: GBP £57,597 p/m

| | |
|--------------|-------------------------|
| Beds | 0 |
| Baths | 0 |
| Location | St. Sampson's, Guernsey |
| Availability | Local |
| Type | Commercial |

Contact Peter Van de Velde

Rock Property

1 Harbour View, The Albany, South Esplanade, St Peter Port, GY1 1AQ, St Peter Port

<https://www.rockproperty.gg/>

