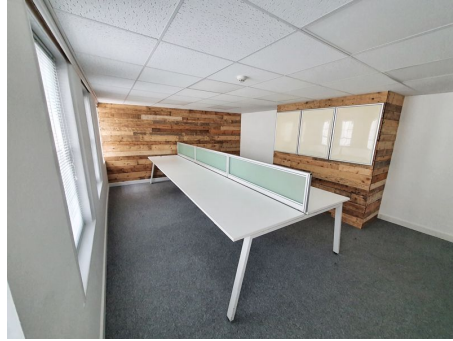


31  
 Commercial To Let in St. Helier



## Description

An opportunity has arisen to let a first and second floor office situated on the eastern side of town. More specifically the property is at the top end of Hill street close to Snow Hill car park. A popular part of town and in close proximity to King Street, Royal Square and the Waterfront. The offices are in immaculate walk in condition with separate Board room, new kitchen as well as 2 further reception rooms. Early viewing recommended.

**Property Reference:** ga\_GC0360 - #2838
**Price:** GBP £1,667 p/m

Beds	0
Baths	0
Location	St. Helier, Jersey
Type	Commercial

Contact Gaudin & Co

22 Hill Street, St Helier

<https://www.gaudin.je>

