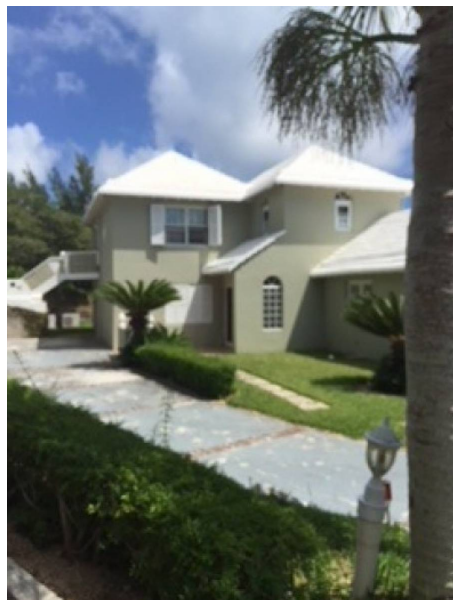


**St. Anne's Drive
 3 Bed House To Let in Southampton**



Description

SOUTHAMPTON; 3 bedroom/2.5 bath Executive home nestled on a hill in a private estate with only four houses on the street and stunning multi-views of the Little Sound and South Shore. This executive home comes complete with all up-to-date major kitchen appliances, stand-alone washer and dryer. Wood and tile throughout, reverse cycle A/C, ceiling fans and working fireplace in living room. This large executive home has a large yard, private parking and storage in the lower basement, and it's on bus routes to both South Road and Middle Road. Anglican Church nearby. Within walking distance to major hotels, restaurants, post offices, places of interest, beaches, a nursery and primary schools. Listed for \$6,000/month.

Property Reference: brn_BAP569 - #32860

Price: \$6,000 p/m

Beds	3
Baths	2
Location	Southampton, Bermuda
Availability	Bermudian
Type	House

Contact Don Ricardo Wynn

Brian S. Alkon Realty

Suite #1, #9 DeMello Reach, St. George's

<http://www.briansalkonrealty.com>

