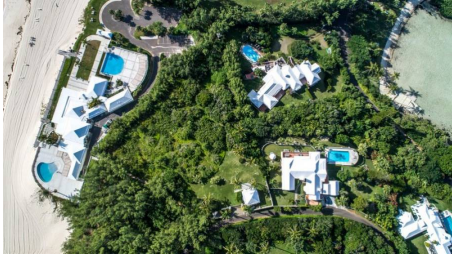


**4 Shore Lane
 House For Sale in St. Georges**



Description

'Inside' the Mid Ocean Club gate on the Tucker's Town peninsula is far and wide considered Bermuda's most coveted location. Non-Bermudian category homes here sell well in excess of \$10 million, and the "per acre" price for a Non-Bermudian category tear-down home currently stands at more than \$12 million. This 1.15 acre building lot with just a one-room cottage with kitchenette and bathroom -- quite literally a playhouse -- represents the very last opportunity to purchase and build in this prime location without tearing down a substantial home. Playhouse adjoins the stunning Rosewood Bermuda beach club and is an easy walk or golf-cart ride from the private Mid Ocean Club and Tucker's Town Cove. The South Shore views are superb and the zoning...

Property Reference: chr_1802011825229549 - #27464 **Price:** POA

Beds	0
Baths	0
Location	St. Georges, Bermuda
Availability	International
Type	House

Contact Christies International Real Estate | Sinclair Realty

Suite 730, 48 Par-La-Ville Road, Hamilton

<http://www.sinclairrealty.com>

