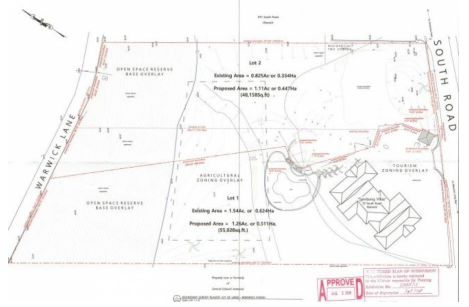


## Breakers Beach Access Sandsong Lot Land For Sale in Warwick



### Description

A Unique opportunity to become the Owner/Landlord of 2.37 acres subdivided into two Res. 2 lots. Lot 1 comprised of 1.26 acres upon which four 999-year leasehold condos and a swimming pool have already been built. Lot 2 is comprised of 1.1-acre of shovel-ready land and has had planning approval in principle for the development choice of either more condos or a private residence. It is located on South Shore Road with direct beach access on The Breakers Beach. Available as 100% share transference to become Owner/Landlord for the whole development.

<b>Property Reference:</b> clba_8653 - #28873	<b>Price:</b> \$575,000
---	-------------------------

Beds	0
Baths	0
Location	Warwick, Bermuda
Availability	Bermudian
Type	Land

### Contact Jack Kripl

Coldwell Banker Bermuda Realty

Atlantic House, Hamilton

<http://www.bermudarealty.com/>

