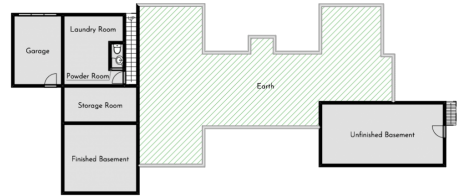


Larradee 3 Bed House For Sale in Southampton



Description

On over an acre of gently-rolling verdant grounds extending to the waters of Jews Bay, “Larradee” is one of those rare opportunities. Quietly situated within this exclusive neighbourhood and exuding the beauty of Bermudian architecture, attractive Cedar doors graciously welcome you into the home. At approximately 3,700 sq. ft., the generously proportioned sun-filled rooms and beautiful wood flooring enhance the living spaces. Large living room with a fireplace opens out onto a covered verandah and the lawns beyond. 3 bedrooms each with ensuite bathroom, family room, dining and kitchen complete the main level. The lower level includes a playroom or man cave, large dry storage, the laundry, garage and an additional 400 square foot of partially...

Property Reference: deco_362 - #31189

Price: \$2,200,000

Beds	3
Baths	4
Location	Southampton, Bermuda
Availability	Bermudian
Type	House

Contact Matt Shrubb

Shrubb Realty
 1 Chancery Lane , City of Hamilton
<http://shrubbrealty.com/>

