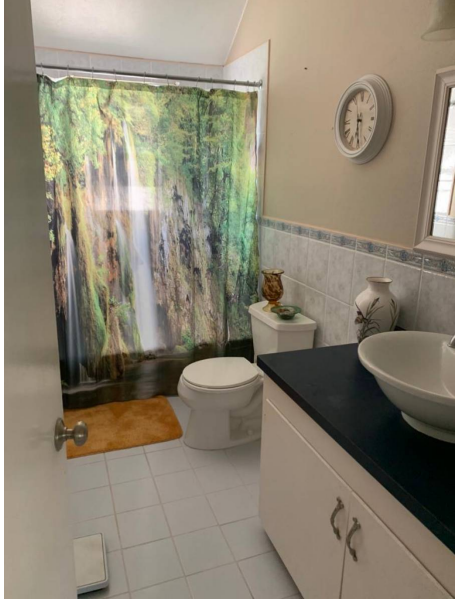


**Southdown Farm
 2 Bed House For Sale in Southampton**



Description

Private townhouse tucked away nestled in at Southdown Farm overlooking the open space and gardens also close to South Shore but sheltered from storms by the crest of the hill. Large open plan living room with fireplace and dining area, fully fitted kitchen and storage below the stairs - on the upper level we have two large bedrooms one having bath ensuite with plenty of closets and a second bath as well. The patio area is covered which allows for outdoor dining and entertaining.

Property Reference: dy_Southdown Farm - #32581 **Price:** \$575,000

Beds	2
Baths	2
Location	Southampton, Bermuda
Availability	Bermudian
Type	House

Contact Dale Young

Dale Young Properties Ltd.
 P O Box WK 770, Warwick
<http://dyoungproperties.com>

