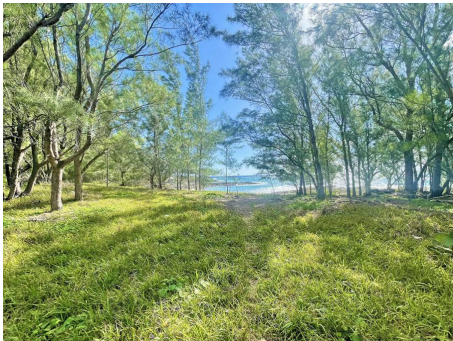


Pampas Lot C20

Land For Sale in Smith's



Description

A once in a lifetime opportunity to purchase vacant land that has never publicly been available before, in the exclusive neighbourhood of Pampas Estate. As you enter the Estate, you are welcomed down the famed long treelined driveway establishing the utmost in curb appeal and intrigue. There are three Residential-2 Zoned Lots available for sale, with Lot 5 of 0.423 Acres priced at \$950,000, which is one of the most private at the end of the eastern cul-de-sac. Lot 28, which would be the gatehouse home at the end of the long driveway but closest to the entry of the Estate, is 0.343 Acres and priced at \$650,000. Finally, the direct beach facing waterfront Lot C20 of 1.992 Acres, which is two lots together sold as one, and is priced at \$1,995,000....

Property Reference: reg\_SM884 - #36509

Price: Under Contract

Beds	0
Baths	0
Location	Smith's, Bermuda
Availability	Bermudian
Type	Land

Contact Ben Rego

Rego Sotheby's International Realty

85 Front Street, Hamilton

<http://www.regosothebysrealty.com/>